

COVID-19 Monitoring Report

Southwark's Outbreak Prevention & Control Plan

Knowledge & Intelligence Team

Southwark Public Health Division

18 March 2021

 @lb_southwark  facebook.com/southwarkcouncil

Cases, bed occupancy and mortality continue to decrease, but the decline in infections has recently slowed

KEY MESSAGES

Case rates across London continue to decrease on the whole, but the decline has slowed, with many boroughs experiencing fluctuations in their cases.

- Southwark had 63 confirmed cases of COVID-19 in the week up to 12 March.
- Across London, most boroughs now have incidence rates below 50 per 100,000; with three boroughs having rates below 25 per 100,000.

The number of NHS hospital inpatients with COVID-19 symptoms continues to decline.

- Across the capital, more than 1,100 hospital inpatients have confirmed COVID-19, with almost 300 of these occupying mechanical ventilation beds.

Coverage of the COVID-19 vaccine continues to increase across priority groups, and is comparable to similar boroughs such as Lambeth.

- Over 71,000 people registered with a Southwark GP have received their first dose of the vaccine.
- There remains significant inequalities between ethnic minority groups, with coverage lowest among those from Black African ethnic background.
- There are significant geographical inequalities in coverage, with levels lowest in Peckham and highest in Dulwich Village.

Cases in Southwark continue to fall, with the borough having the second lowest incidence in London

CASES

Across London, cases continue to decrease but the pace of decline in infections has recently slowed, with many boroughs showing fluctuations in the past 7 days.

- Reported 7-day incidence to 12 March is now 20 per 100,000; decreasing by almost half (43%) in the last week. This equates to 63 confirmed cases.
- Across London, 27 of the 32 boroughs have incidence rates below 50 per 100,000; with three boroughs having incidence rates below 25 per 100,000.

Figure 1: Confirmed daily cases in Southwark

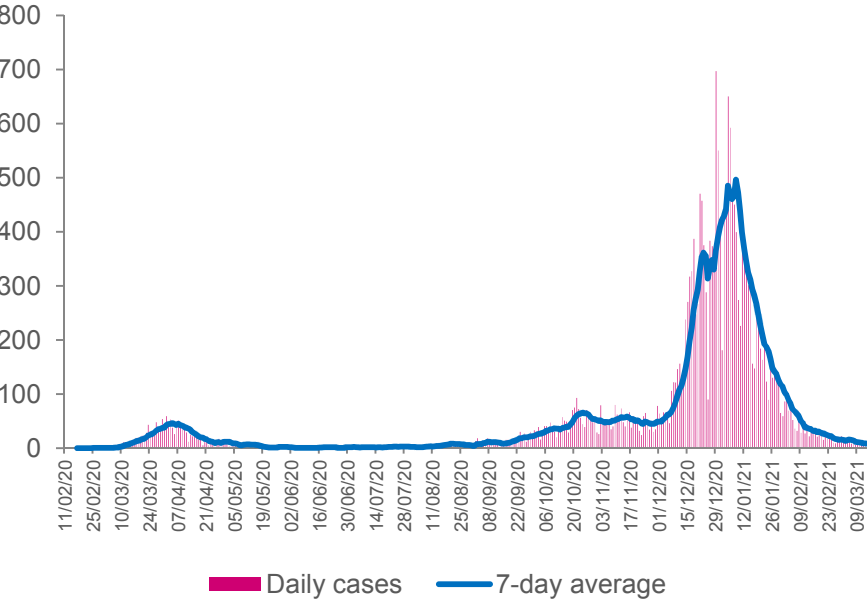
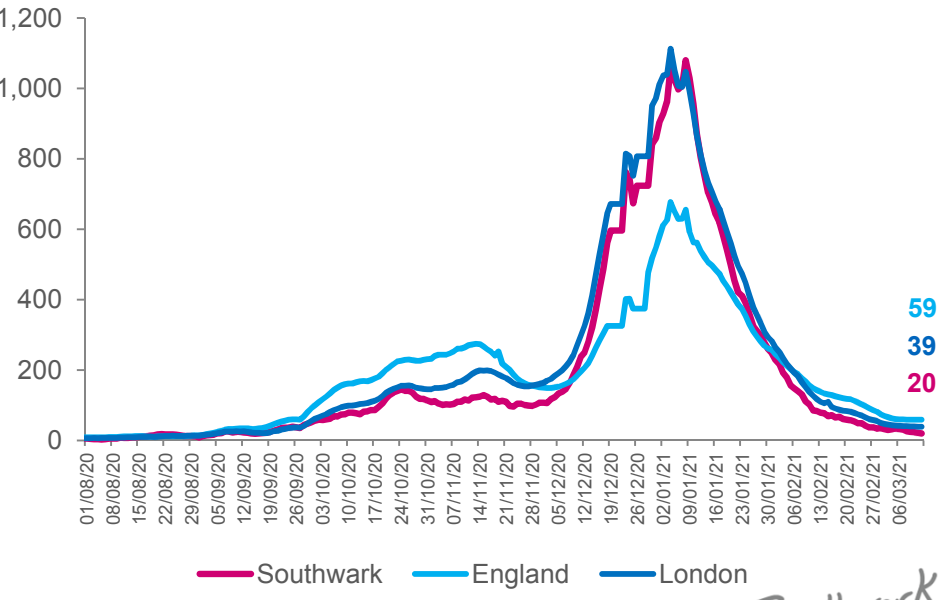


Figure 2: Weekly incidence rate per 100,000 population



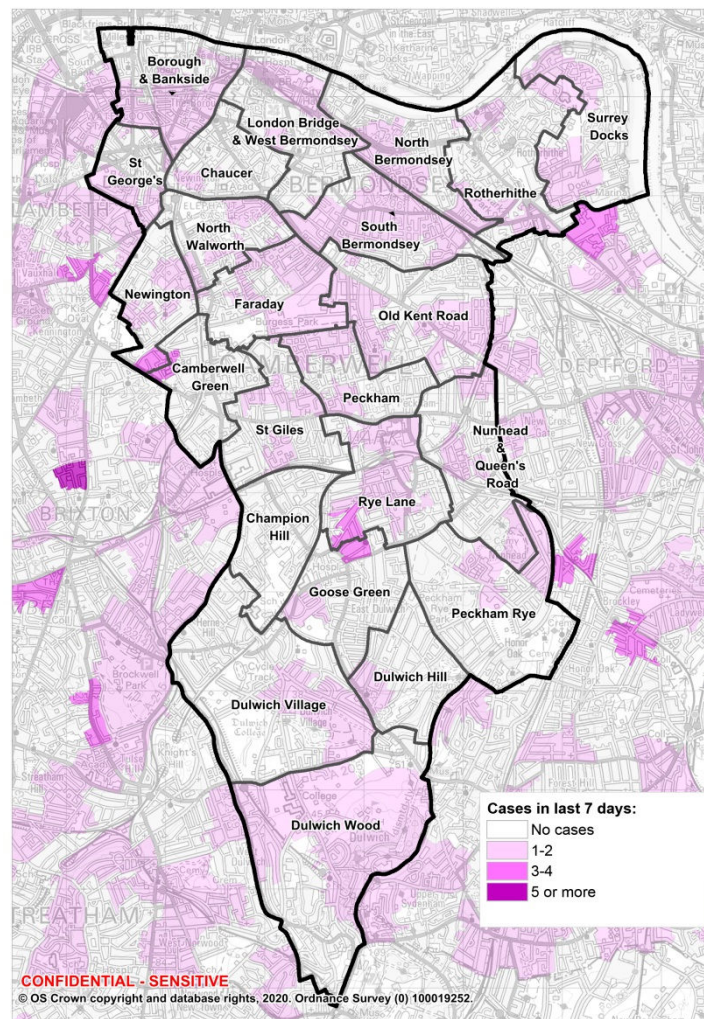
References

- NHS Digital COVID-19 Local Authority Testing Dashboard.
- PHE Regional Situation Awareness Report. Data to 12 Mar.



Case numbers continue to decline across Southwark, with low incidence rates across the borough

CASE DISTRIBUTION



Reference

1. PHE Daily Line List. Data to 16 March

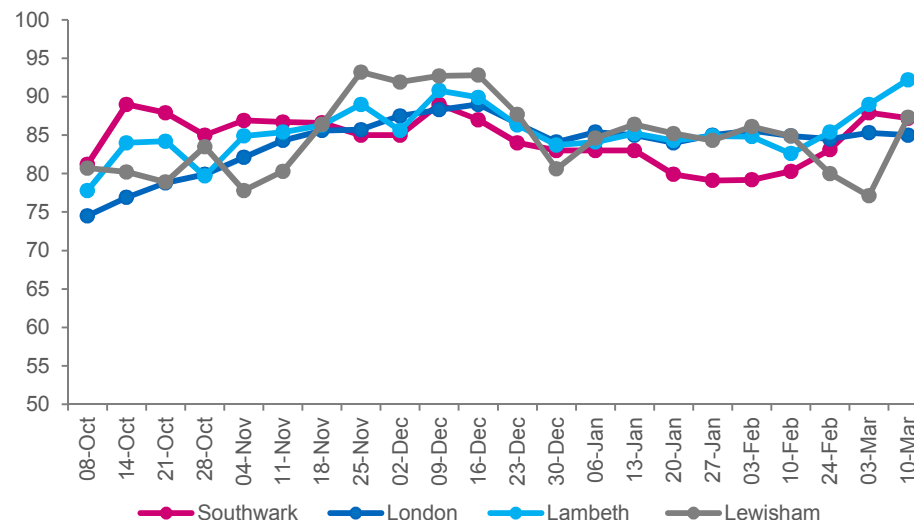
The overall case completion rate for Southwark has seen a recent increase

CONTACT TRACING

NHS Test & Trace data enables monitoring of COVID-19 spread through the testing of suspected cases and tracing of recent close contacts.

- The overall case completion rate for Southwark is made up by the follow-up rates of the local and national teams, and the rates of case auto-completion of the online contact tracing form.
- Completion figures for national and local contact tracing in the week to 10th March:
 - 87% of cases were completed; higher than 85% for London as a whole; and comparable to Lewisham.
 - 75% of contacts were completed; compared to 85% for London as a whole.

Figure 3: Overall weekly case completion rates (%)



Reference

1. PHE. London contract tracing weekly outcome reports. Data to 10 Mar.

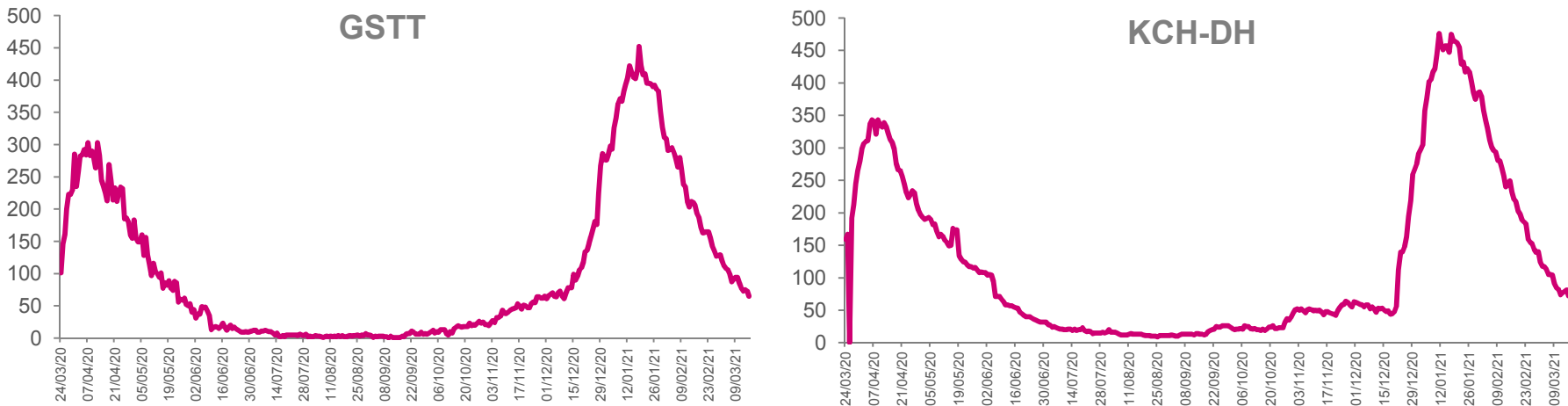
The number of NHS hospital inpatients with COVID-19 is declining, both locally and across London

SECONDARY CARE

Data on local hospitals' confirmed COVID-19 admissions and inpatient diagnoses are provided by NHS situation reports.

- In the last week, combining new admissions and in-patient diagnoses, there have been:
 - 3 cases at GSTT, and 28 cases at KCH-DH.
- There are currently **72** confirmed COVID-19 patients at KCH-DH, and **65** at GSTT.
- Across London, there are **1,138** patients in hospital with COVID-19, comparable to numbers seen in early November. Of these patients, **287** are on mechanical ventilation beds in critical care.

Figure 4: Bed occupancy with COVID-19 diagnosis



References

- SEL Early Warning report. Data to 16 Mar.
- Coronavirus.data.gov.uk/healthcare . Data to 16 Mar.

Cases continue to decrease locally and across London, however concerns regarding new variants remain

HORIZON SCANNING

Alert Levels	<p>The alert level has been lowered to 4 “transmission is high or rising exponentially”. ONS estimates 1 in 320 people in London had COVID-19 in the week to 6 March. The national R number is currently 0.6-0.8, the same as London.</p>
Key Research	<p>ONS now estimate that 1 in 3 people in England have antibodies against COVID-19, and therefore have some level of protection against the virus. This has increased from 1 in 5 people last month, highlighting the impact of the national vaccine rollout.</p> <p>Results from a recent study suggest that the B.1.1.7 Kent variant first identified in September has between 30% and 100% higher mortality than previous strains. REACT-1 study results indicate the national pace of decline in infections has recently slowed.</p>
Vaccination	<p>The WHO and the European Medical Association continue to review the Oxford-AstraZeneca vaccine safety data, but both have stated that there is no evidence that the vaccine is the cause of recent incidents involving blood clots.</p> <p>National and local research shows vaccine hesitancy to be highest among black people, the young and the low-paid. However, positive attitudes towards vaccines have increased overall since December.</p>
COVID-19 Mortality	<p>Southwark has had 429 deaths related to COVID-19, with 9 deaths in the week up to 5 March. Overall, Southwark had 297 excess deaths in 2020, with an additional 141 excess deaths in 2021.</p>

Find out more at
southwark.gov.uk/publichealth

Southwark Public Health Division

 [@lb_southwark](https://twitter.com/lb_southwark)  facebook.com/southwarkcouncil